

# Plan 1578/1a



## LEGEND

- Road Centrelines - DLI 1/5/04
- Clearing Instruments
- Areas Approved to Clear



0 625 m  
 Scale 1:23000  
 (Approximate when reproduced at A4)

Geocentric Datum Australia 1994

Note: the data in this map have not been  
 projected. This may result in geometric  
 distortion or measurement inaccuracies.

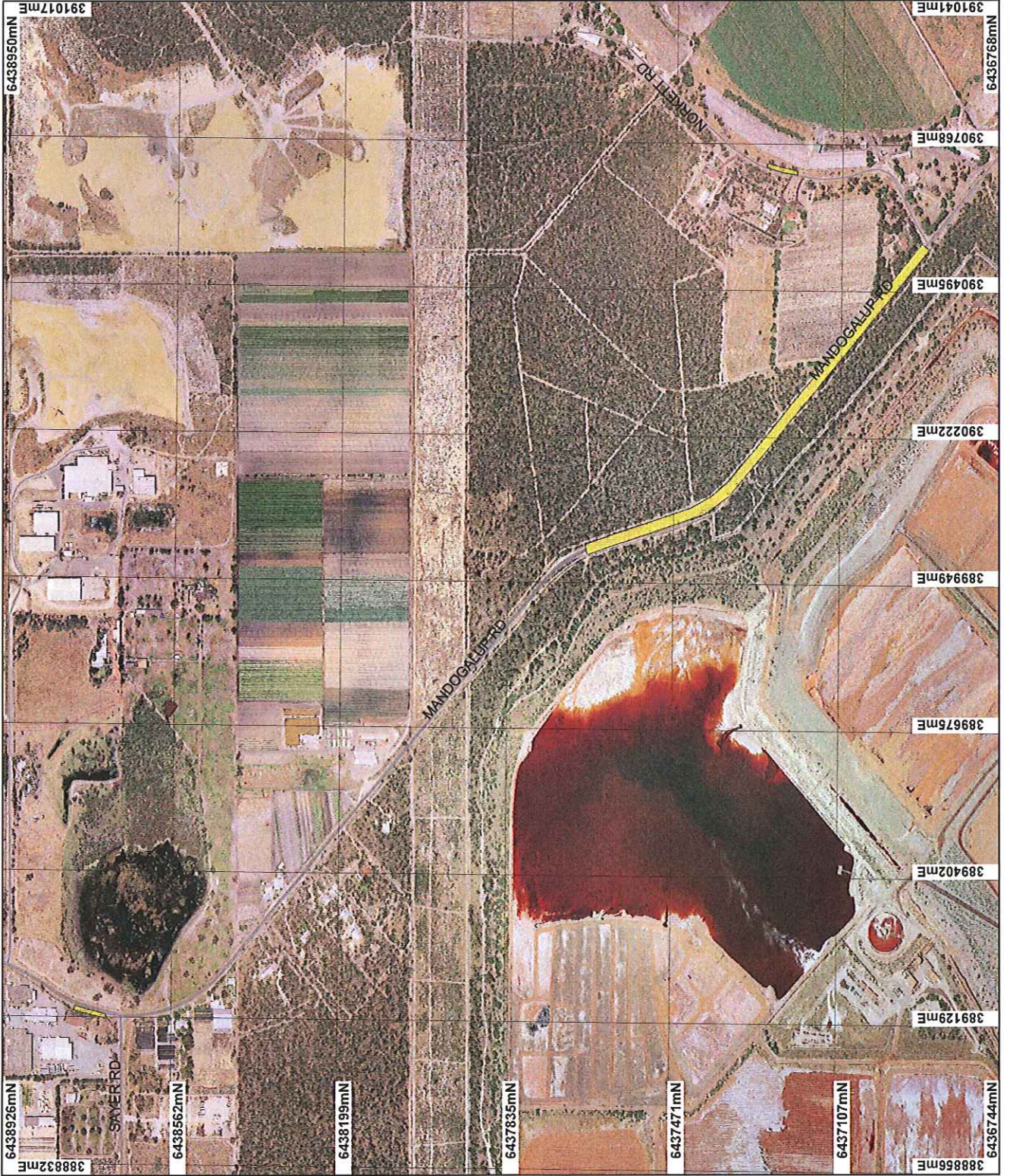
Kim Taylor Date 23/3/07

Officer with delegated authority under Section 20 of  
 the Environmental Protection Act 1986  
 Information derived from this map should be  
 confirmed with the data custodian acknowledged  
 by the agency acronym in the legend.





# Plan 1578/1b



**LEGEND**

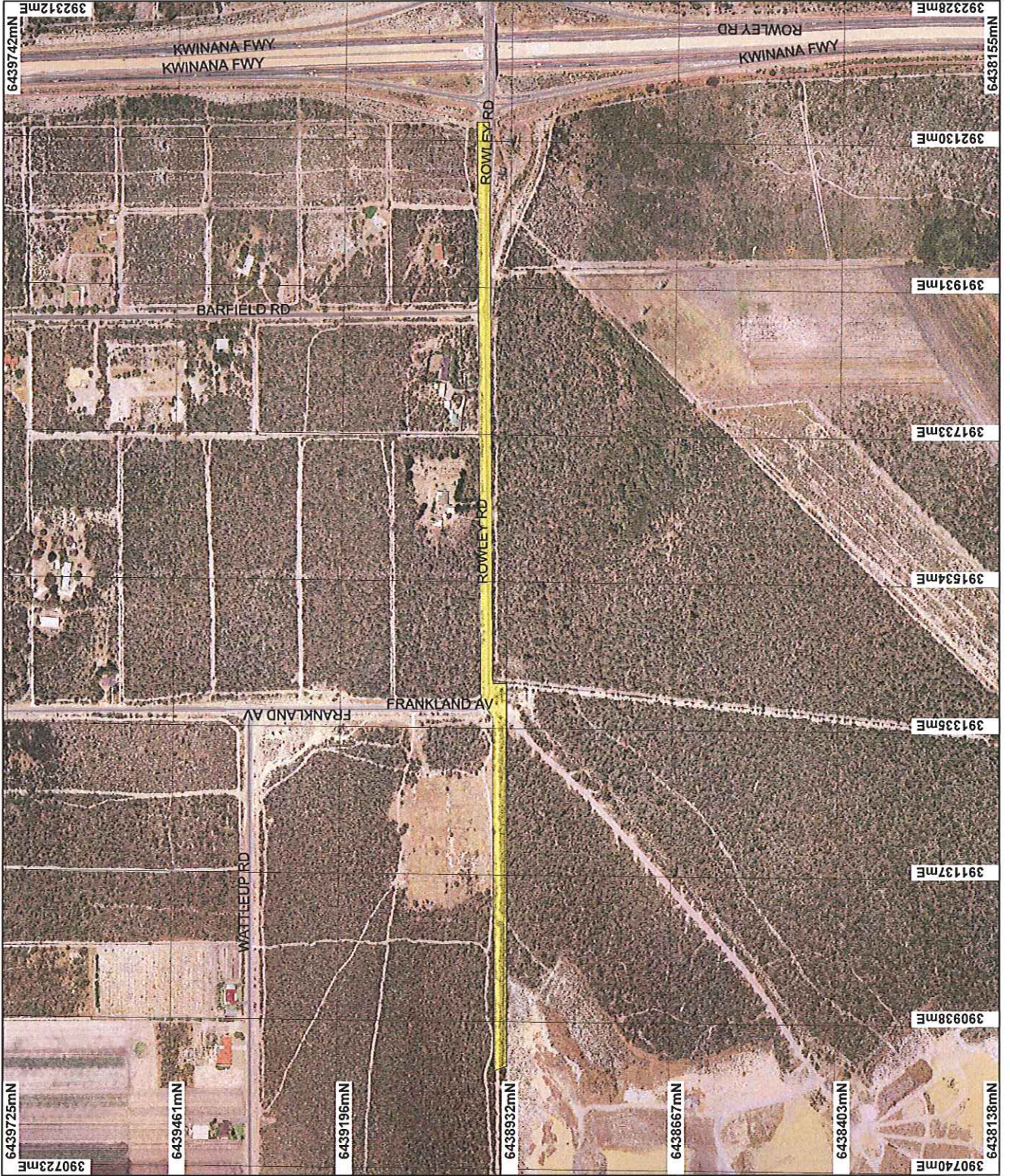
- Road Centrelines - DLI 1/5/04
- Clearing Instruments
- Areas Approved to Clear

N  
 0 to 300 m  
 Scale 1:1000  
 (Approximate when reproduced at A4)  
 Geocentric Datum Australia 1994  
 Note: the data in this map have not been projected. This may result in geometric distortions or measurement inaccuracies.  
 Date: 23/3/07  
 Kim Taylor

Officer with delegated authority under Section 20 of the Environmental Protection Act 1986  
 Information derived from this map should be confirmed with the data custodian acknowledged by the agency acronym in the legend.  
  
 Department of Environment  
 WA Crown Copyright 2002

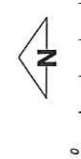


# Plan 1578/1c



## LEGEND

-  Road Centrelines - DLI 1/5/04
-  Clearing Instruments
-  Areas Approved to Clear



Scale 1:8000  
(Approximate when reproduced at A4)

Geocentric Datum Australia 1994

Note: the data in this map have not been  
checked. This may result in geometric  
distortion or measurement inaccuracies.

Kim Taylor Date 23/9/07

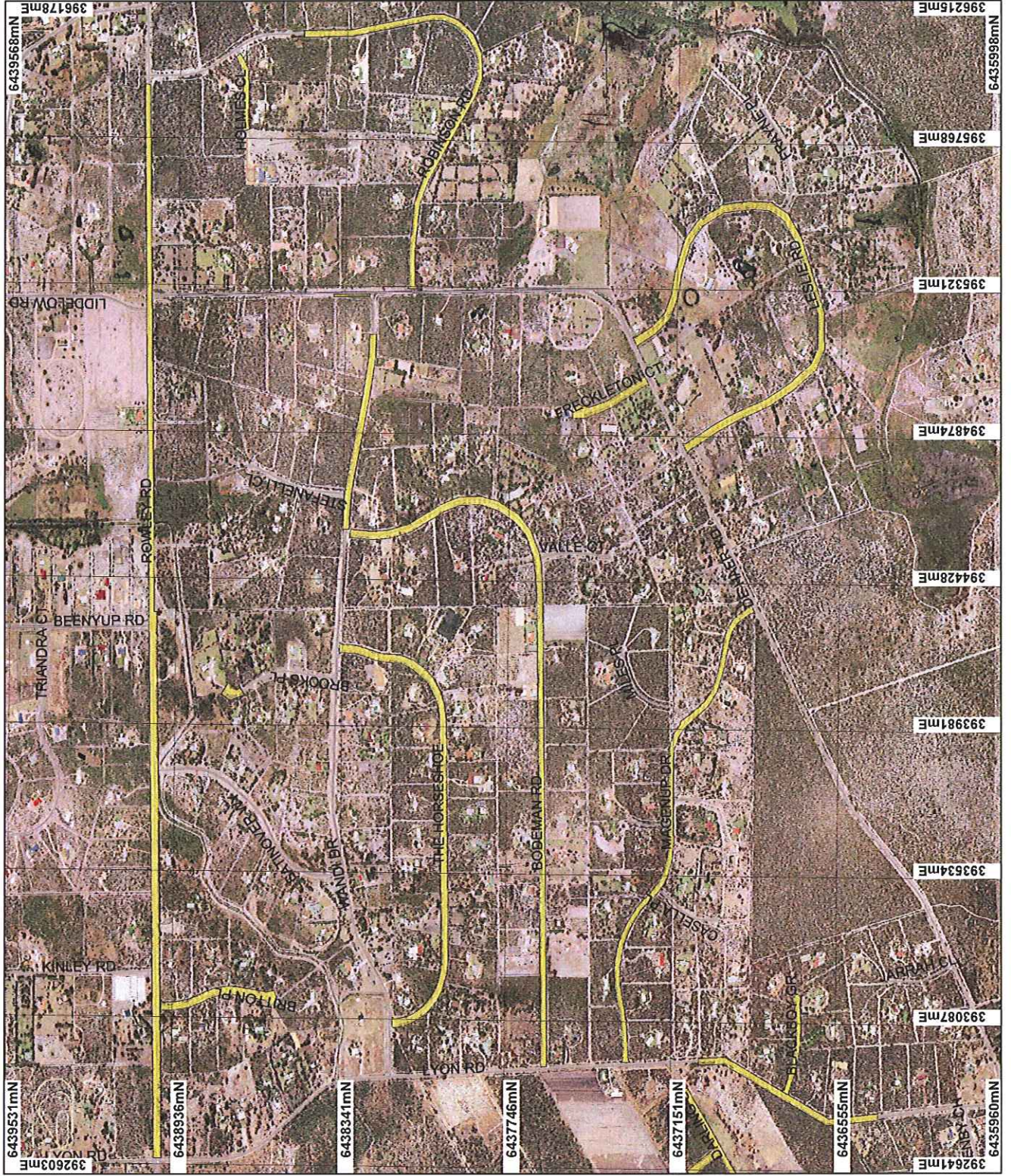
Officer with delegated authority under Section 20 of  
the Environmental Protection Act 1986  
Information derived from this map should be  
confirmed with the data custodian acknowledged  
by the agency acronym in the legend.







Department of  
Environment  
WA Crown Copyright 2002



# Plan 1578/1d



## LEGEND

-  Road Centrelines - DLI 1/5/04
-  Towns - DLI 8/04
-  Clearing Instruments
-  Areas Approved to Clear



0 500 m

Scale 1:78000  
(Approximate when reproduced at A4)

Geocentric Datum Australia 1994  
Note: the data in this map have not been projected. This may result in geometric distortion or measurement inaccuracies.

Kim Taylor Date 23/3/07

Officer with delegated authority under Section 20 of the Environmental Protection Act 1986  
Information derived from this map should be confirmed with the data custodian acknowledged by the agency acronym in the legend.



Department of Environment

WA Crown Copyright 2002



# Plan 1578/1e



## LEGEND

- Road Centrelines - DLI 11/5/04
- Clearing Instruments
- Areas Approved to Clear



0 150 m

Scale 1:6000  
(Approximate when reproduced at A4)

Geocentric Datum Australia 1994

Note: the date in this map have not been  
plotted. This may result in geocentric  
distortion or measurement inaccuracies.

*[Signature]* Date *23/3/00*

Kim Taylor

Officer with delegated authority under Section 20 of  
the Environmental Protection Act 1986  
Information derived from this map should be  
confirmed with the data custodian acknowledged  
by the agency acronym in the legend.





# Plan 1578/1f



## LEGEND

-  Road Centrelines - DLI 1/5/04
-  Clearing Instruments
-  Areas Approved to Clear



0 150 m

Scale 1:6000  
(Approximate when reproduced at A4)

Geocentric Datum Australia 1994

Note: the date in this map have not been projected. This may result in inaccurate depiction or measurement inaccuracies.

Kim Taylor Date 23/9/07

Information derived from this map should be confirmed with the data custodian acknowledged by the agency acronym in the legend.





# Plan 1578/1g



## LEGEND

- Road Centrelines - DLI 1:500
- Clearing Instruments
- Areas Approved to Clear



Scale 1:11000  
(Approximate when reproduced at A4)

Geocentric Datum Australia 1994

Note: the data in this map have not been projected. This may result in geometric distortion or measurement inaccuracies.

Date 23/3/02

Kim Taylor  
Officer with delegated authority under Section 20 of the Environmental Protection Act 1986

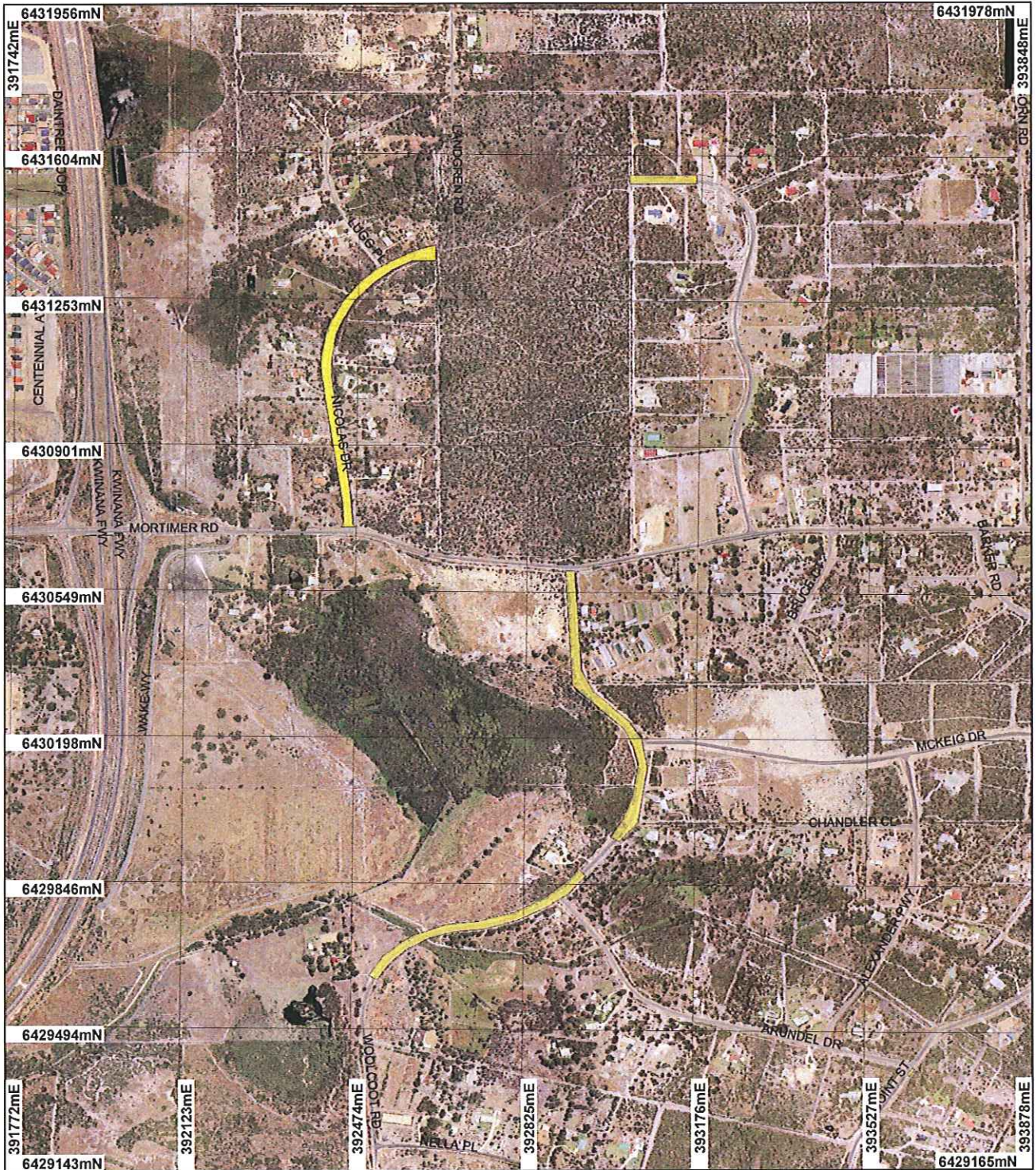
Information derived from this map should be confirmed with the data custodian acknowledged by the agency acronym in the legend.



WA Crown Copyright 2002



# Plan 1578/1h



## LEGEND

Road Centrelines - DLI  
1/304

Clearing Instruments

Areas Approved to Clear



0 375 m

Scale 1:13000

(Approximate when reproduced at A4)

Geocentric Datum Australia 1994

Note: the data in this map have not been projected. This may result in geometric distortion or measurement inaccuracies.

Date 23/3/07

Kim Taylor  
Officer with delegated authority under Section 20 of the Environmental Protection Act 1986

Information derived from this map should be confirmed with the data custodian acknowledged by the agency acronym in the legend.



Department of Environment

WA Crown Copyright 2002



# Plan 1578/1i



## LEGEND

-  Road Centrelines - DLI 1/5/04
-  Clearing Instruments
-  Areas Approved to Clear



0 125 m

Scale: 1:4583  
(Approximate when reproduced at A4)

Geocentric Datum Australia 1994

Note: the date in this map have not been  
georeferenced. This may result in geometric  
distortion or measurement inaccuracies.

*Kim Taylor* Date: **23/9/07**

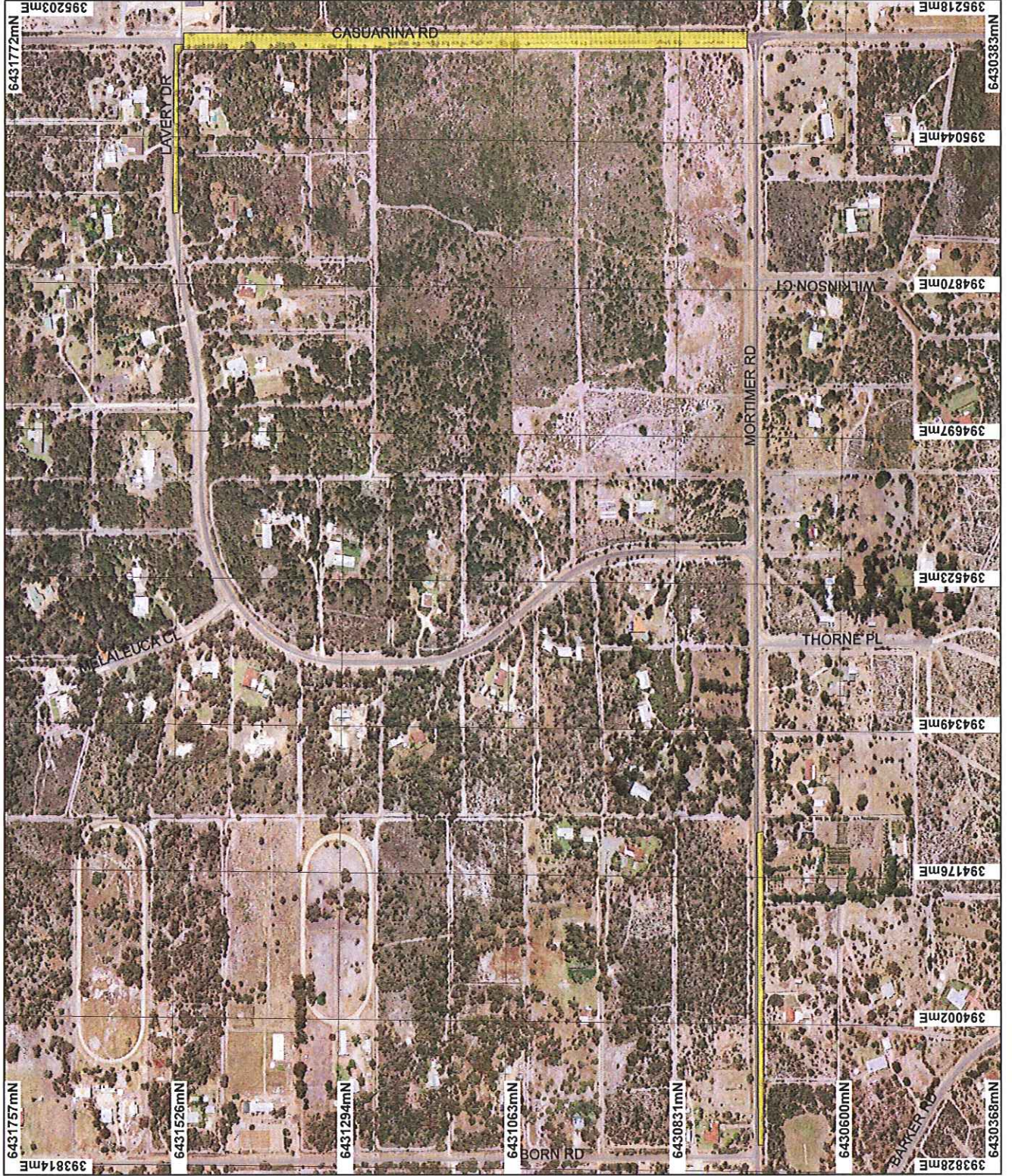
Officer with delegated authority under Section 20 of  
the Environmental Protection Act 1986  
Information derived from this map should be  
confirmed with the data custodian acknowledged  
by the agency acronym in the legend.



Department of  
Environment  
WA Crown Copyright 2002



# Plan 1578/1J



## LEGEND

-  Road Centrelines - DLI 1/5/04
-  Clearing Instruments
-  Areas Approved to Clear



Scale 1:7000  
(Approximate when reproduced at A4)

Geocentric Datum Australia 1994

Note: the data in this map have not been projected. This may result in geometric distortion and measurement inaccuracies.

*23/3/07*  
Date: 23/3/07

RKD:ajfor

Officer with delegated authority under Section 20 of the Environmental Protection Act 1986  
Information derived from this map should be confirmed with the data custodian acknowledged by the agency acronym in the legend.



WA Crown Copyright 2002



# Plan 1578/1k



## LEGEND

⚡ Road Centrelines - DLI  
1/8/04

Clearing Instruments

■ Areas Subject to Conditions



0 150 m

Scale 1:6000

(Approximate when reproduced at A4)

Geocentric Datum Australia 1994

Note: the data in this map have not been projected. This may result in geometric distortion or measurement inaccuracies.

*[Handwritten Signature]*  
Date 29/3/07

Kim Taylor

Officer with delegated authority under Section 20 of the Environmental Protection Act 1986

Information derived from this map should be confirmed with the data custodian acknowledged by the agency acronym in the legend.



Department of Environment

WA Crown Copyright 2002